

# Preliminary Year Progression Regulations

**Students must complete all the Preliminary Year modules (120 credits) in order to progress to Qualifying Year (Y2).**

Preliminary Year modules consist of **English for Academic Purposes (EAP) modules** and **Content modules**. In order to pass a given module, students must complete:

## 1. First-sit assessment

- a. EAP modules: Achieve at least 40% in each of the EAP module assessed components\*.**

*\* The information for EAP module assessed components can be found in the respective module page on Moodle.*

- b. Content modules: Achieve at least 40% as an overall module mark for Preliminary Year.**

## 2. Re-assessment

### a. English for Academic Purposes (EAP) modules

If, at their first attempt, a student fails to achieve at least 40% in each assessed component, he/she will be required to resit/resubmit ALL failed components of that module at the earliest available opportunity.

### b. Content Modules

If, at their first attempt, a student fails to achieve a final overall module mark of at least 40% in a Content module, he/she will be required to take a re-sit/re-submit at the earliest available opportunity.

## 3. Retake of module

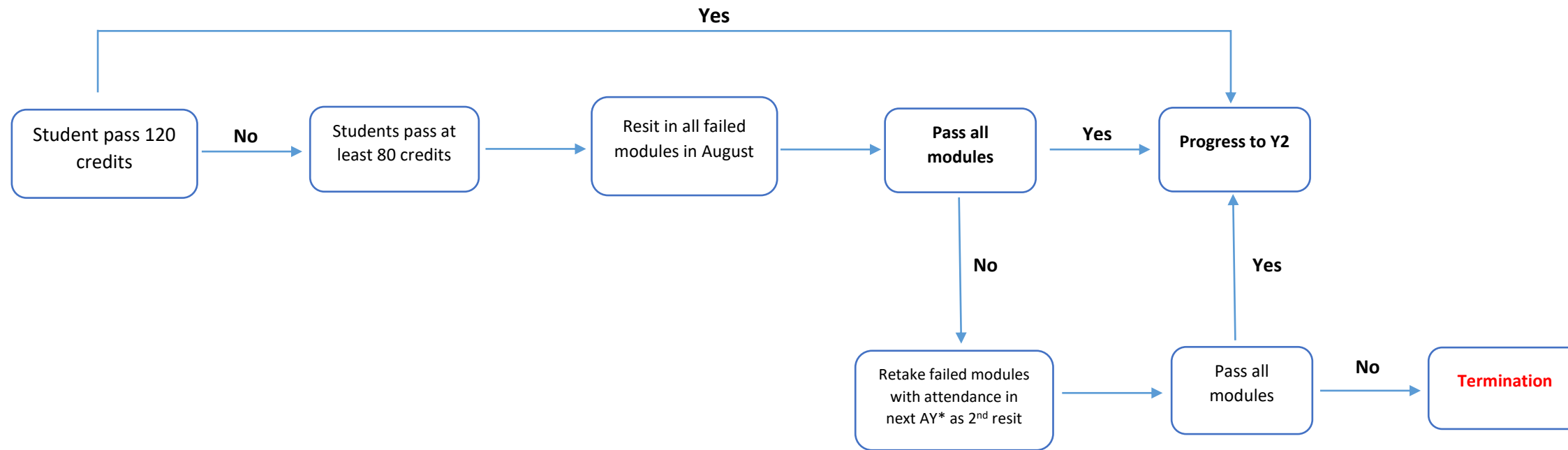
A student who, after re-assessment, has not successfully completed their Preliminary Year programme, but

(a) has passed at least 80 credits of modules, and (b) has an average of at least 40% across all modules in the year will be permitted one further re-assessment in the failed modules by retaking the module with attendance. If, after this one further re-assessment, the student has still not completed 120 credits, the student will not be permitted to progress further on the course and will have no further re-assessment opportunities.

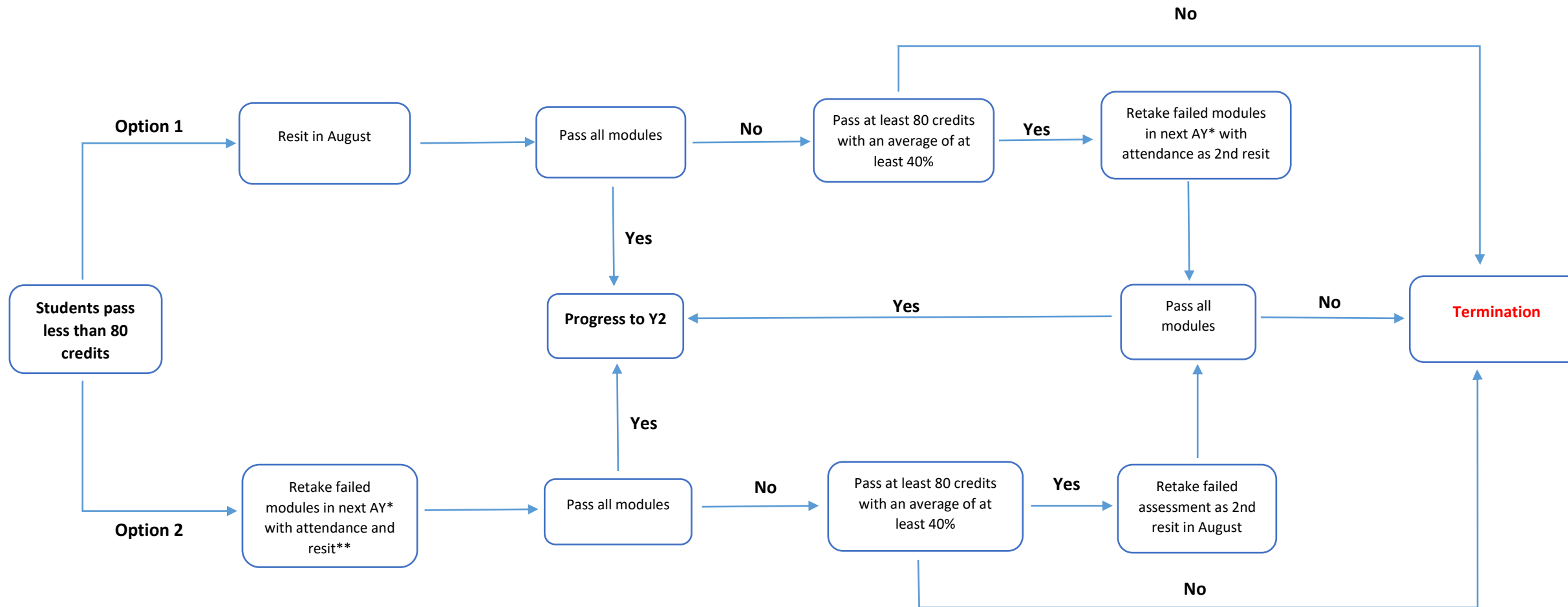
The regulations take effective from 2021-22 AY

# Preliminary Year Progression Regulation Flowchart

## 1. For students who pass at least 80 credits with a weighted average marks\* of at least 40 in 1<sup>st</sup> sit



## 2. For students who pass less than 80 credits or whose weighted average marks\* are below 40 in 1<sup>st</sup> sit



\* AY=Academic Year

Weighted average marks\* =  $(\text{module overall } 1 * \text{module credit } 1 + \text{module marks } 2 * \text{credits } 2 + \dots) / 120$  (total credits)

\*\* Student will be required to retake the failed module(s) with attendance and then resit/resubmit the assessments they failed.