



University of
Nottingham

UK | CHINA | MALAYSIA

University of Nottingham Ningbo China

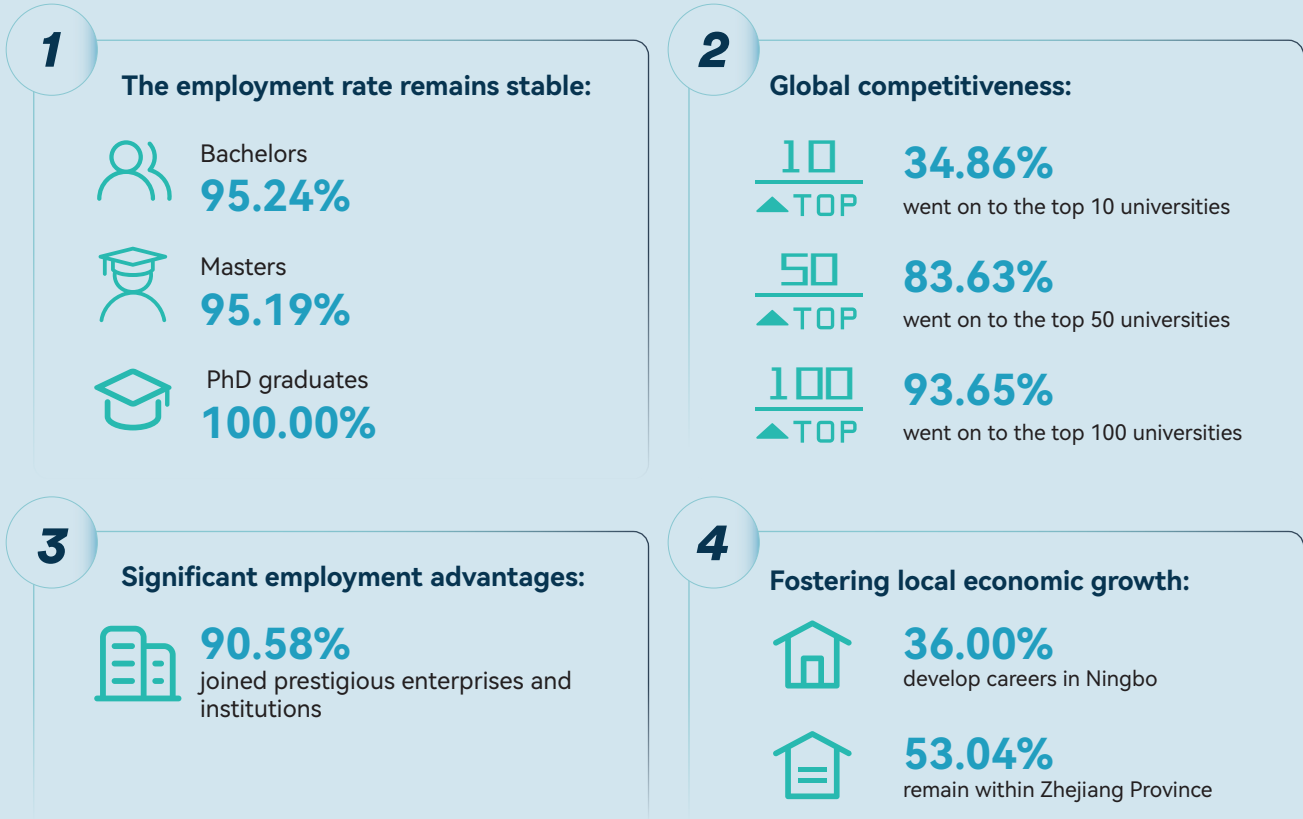
2023-2024 Academic Year Careers and Employability Annual Report



Careers and Employability Service
is Awarded
University of Nottingham
Vice-chancellor Medal

Global Certified
Five-star Employment Service

Highlights

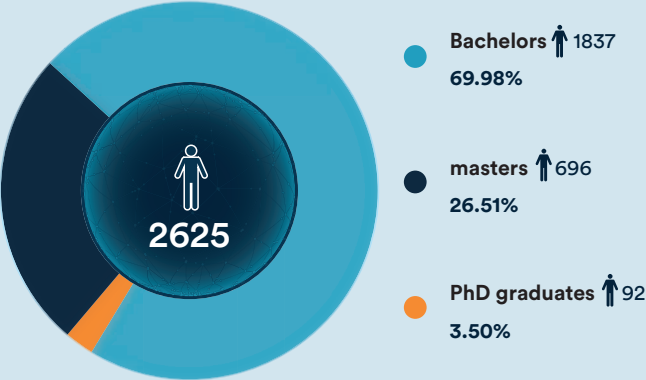


Graduate Profile

The class of 2024 has a total of 2,625 graduates. Bachelors, masters, and PhD graduates accounted for 69.98%, 26.51%, and 3.50% respectively*.

Domestic students constitute 94.67% of the student population, while International, Hong Kong, Macau, and Taiwan students represent 5.33%. Employment rates for graduates at all academic levels remain consistently robust.

*In this report, each ratio is calculated separately by rounding to two decimal places, so the sum is not exactly equal to 100.00%. The same applies in the following text.



Analysis of Domestic Bachelor Destinations

Comprehensive graduate outcomes

Employment rate*: 95.24%, comprising: further study: 88.85% (spanning 19 countries/regions globally), direct to work: 5.89%, freelance: 0.25%, startup 0.25%.

*The university's careers and employability service collected data and conducted follow-ups on the destination data of 1597 domestic bachelor graduates admitted through the national college entrance examination (Gaokao). The response rate of graduates was 100.00%.

Further Study Global Competitiveness

Among graduates continued their studies overseas, 34.86% entered a global top 10 university or programme; 83.63% went on to the global top 50 universities or programmes; 93.65% were admitted by the global top 100 universities or programmes*. 15 UNNC bachelor graduates received PhD offers.

*QS 2025 World University Ranking /QS World University Rankings By Subject 2025/ARWU 2024 Academic Ranking of World Universities/US News 2024-2025 Best Global Universities Ranking/Times Higher Education 2025 World University Ranking systems' highest-position criteria, uniformly applied hereafter.

By major further study destination countries/regions

The United Kingdom (45.24%), the United States (22.55%), Australia (16.70%), Singapore (4.30%), China (3.17%), and the Hong Kong Special Administrative Region of China (2.75%) serving as the primary study destinations. This demonstrates the diversity of our graduates' academic aspirations.

86.45%

of students attended institutions/ programmes ranked in the Top 10

United Kingdom: 86.45% of students attended institutions/programmes ranked in the Top 10*, including: 12 to the University of Oxford, 16 to the University of Cambridge, 89 to Imperial College London, 44 to the London School of Economics and Political Science, 8 to the University of the Arts London.

*Based on Times Higher Education 2025 World University Rankings/QS World University Rankings by Subject 2025

95.03%

enrolled in institutions/ programmes ranked in the Top 50

United States: 95.03% enrolled in institutions/programmes ranked in the Top 50*, including: 1 to Stanford University, 11 to Duke University, 6 to Northwestern University, 52 to Johns Hopkins University, 15 to the University of Pennsylvania, 29 to Cornell University, 7 to the University of Chicago, 5 to Brown University, 1 to Dartmouth College, 5 to the University of California, Berkeley, 4 to Carnegie Mellon University, 17 to the University of Michigan, 12 to the University of California, San Diego, 28 to New York University, 11 to the University of Illinois Urbana-Champaign.

*Based on US News Best Colleges 2025/QS World University Rankings by Subject 2025

87.50%

were admitted to Top 3 institutions

Hong Kong SAR of China: 87.50% were admitted to Top 3 institutions, including: 19 to The University of Hong Kong, 9 to The Chinese University of Hong Kong, 7 to The Hong Kong University of Science and Technology.

98.36%

enrolled in Top 2 institutions

Singapore: 98.36% enrolled in Top 2 institutions, including: 44 to the National University of Singapore, 16 to Nanyang Technological University.

98.31%

joined Group of Eight universities

Australia: 98.31% joined Group of Eight universities, including: 5 to The University of Melbourne, 9 to The Australian National University, 137 to The University of Sydney, 32 to The University of New South Wales.

91.23%

attended prestigious institutions/programmes

Europe: 91.23% attended prestigious institutions/programmes*, including: 26 to the University of Amsterdam, 3 to KU Leuven, 3 to Politecnico di Milano, 2 to Technical University of Munich, 2 to Bocconi University, 1 to INSEAD.

*Based on QS World University Rankings 2025 (Top 100)/Financial Times European Business School Rankings 2024 (Top 20)/QS World University Rankings by Subject 2025 (Top 10)

Deloitte

The University of Nottingham Ningbo China is an outstanding institution of higher education with a global perspective. Here, we have observed the remarkable qualities of UNNC students who are brave in dreaming, acting, and expressing themselves. They possess not only a solid academic foundation but also demonstrate a spirit of courage to explore the unknown and challenge themselves. We have also deeply appreciated the professional support provided by the University. They have not only facilitated our precise connection with the target student demographic but also created a conducive atmosphere for the Employer Presentation through a series of thoughtful arrangements, allowing us to fully present our corporate culture and recruitment needs and engage in in-depth exchanges and interactions with the students.

High-quality employment

The primary employment sectors for bachelors entering direct employment are concentrated in **financial services (22.34%)**, **wholesale and retail trade (10.64%)**, and **education (10.64%)**. Among of them, **84.04%** are employed by fortune global 500 companies and well-known enterprises and institutions.

Among the 102 graduates who went direct to work, engaged in freelance, or founded a start-up, **74.51%** opted for the Yangtze River economic belt, **13.73%** for the Beijing-Tianjin-Hebei metropolitan region, and **3.92%** for the Guangdong-Hong Kong-Macao greater bay area, respectively, while an additional **0.98%** pursued overseas employment.



Unique strengths of the three major faculties

Nottingham University Business School China

The proportions of students entering institutions or programmes ranked in the top 10, 50, and 100 globally are **25.35%**, **83.18%**, and **94.24%** respectively, with 80.41% studying in both top-tier institutions and top-tier disciplines worldwide.

The graduate employment rate reached the highest among three faculties at **95.91%**.

The fields of further study pursued by graduates cover finance, data technology, management, marketing, public policy, health management, and more, highlighting the faculty's strong capability in building an interdisciplinary and internationally integrated educational ecosystem.

Faculty of Science and Engineering

The proportions of students entering institutions or programmes ranked in the top 10, 50, and 100 globally are **41.35%**, **82.52%**, and **93.23%** respectively, with **75.56%** studying in both top-tier institutions and top-tier disciplines worldwide.

All 15 students who received direct PhD admission offers are from the Faculty of Science and Engineering.

83.08% of graduates pursuing overseas studies continued their education in engineering, science, technology, mathematics, and other high-demand fields in the job market. This data not only reflects students' academic aspirations based on personal interests, but also demonstrates the strong alignment between the faculty's educational focus and global industry development trends.

Faculty of Humanities and Social Sciences

The proportions of students entering institutions or programmes ranked in the top 10, 50, and 100 globally are **36.36%**, **85.37%**, and **93.57%** respectively, with **78.49%** studying in both top-tier institutions and top-tier disciplines worldwide.

Half of all admission offers from Oxford and Cambridge to our institution were received by students in the Faculty of Humanities and Social Sciences.

The further study choices by graduates from the Faculty of Humanities and Social Sciences demonstrate an emerging trend in interdisciplinary fields such as Cultural Data & AI, Sustainable & Green Finance, and Health Policy, highlighting our students' limitless possibilities of personal development and diverse future career pathways.

Tencent

The interactive atmosphere at the employer presentation was enthusiastic. The students demonstrated excellent comprehensive qualities, solid professional capabilities, and outstanding communication skills. Their positive feedback and in-depth exchanges have greatly inspired us. The fruitful achievements of talent cultivation in your esteemed university are truly remarkable. We look forward to further deepening our cooperation in areas such as students' career development, university-company collaborative education, internships and practical training in the future, and jointly contributing to the growth and development of outstanding talents.

Analysis of Domestic Masters Destinations

- Employment rate: **95.19%***. **7.29%** were pursuing further study, **83.72%** were direct to work, and **3.41%** were engaged in self- start-up companies, **0.78%** were engaged in freelance work. These graduates are mainly concentrated in fields such as **education (27.34%), financial services (15.17%), and manufacturing (11.29%)**.

*The university's careers and employability service collected data and conducted follow-ups of 678 domestic masters. 645 valid responses had been received, yielding a response rate of 95.13%.

- By type of company: Among graduates who went direct to work, employment destinations include **private enterprises (32.59%), government agencies, educational institutions, and public institutions (29.07%), state-owned and state-controlled enterprises (26.67%)**, as well as **foreign joint ventures (11.67%)**. Notably, **90.56%** of them were employed by fortune global 500 companies, renowned enterprises, public institutions, or government agencies.



- By location of employment: **71.34%** opted for the Yangtze River economic belt, **10.42%** for the Beijing-Tianjin-Hebei metropolitan region, and **6.51%** for the Guangdong-Hong Kong-Macao greater bay area, respectively, while an additional **1.79%** chose an employment overseas.
- Retention in Ningbo and Zhejiang: **Ningbo** emerged as the top city for 2023 masters, absorbing **219** individuals with a retention rate of **36.62%**. Retention in Zhejiang province is **54.35%**. UNNC continues to supply locally-rooted talents with global perspectives and top-tier professional expertise to employers in Ningbo and even Zhejiang.

Siemens

Overall, the students at the University of Nottingham Ningbo China have left an extremely profound and positive impression on me. From their warm and enthusiastic reception upon our initial contact to the insightful questions they posed during our interactions, UNNC students have consistently demonstrated their unique charm and exceptional qualities. They engage in every conversation with a proactive attitude and exhibit a strong academic foundation and keen insight when asking questions. Such behavior undoubtedly highlights the outstanding levels of UNNC students in terms of communication skills, logical thinking, and contemplative abilities. I look forward to more opportunities to interact and collaborate with UNNC in the future, jointly crafting a wonderful new chapter.

Analysis of Domestic PhD Graduate Destinations

- Employment rate: **100.00%***, **98.70%** of graduates secured positions at renowned enterprises and institutions. Specifically, **64.94%** joined higher educational institutions, **22.08%** entered scientific research institutions, medical and health institutions, and other public institutions, and **12.99%** were employed by enterprises.

*The university's careers and employability service collected data and conducted follow-ups of domestic PhD graduates who graduated in 2023. 77 valid responses had been received, yielding a response rate of 97.47%.

- Geographical distribution: **67.53%** opted to work in the Yangtze River economic belt, **3.90%** in the Beijing-Tianjin-Hebei metropolitan region, and **14.29%** in the Guangdong-Hong Kong-Macao greater bay area, while an additional **6.49%** pursued teaching or research positions at overseas universities.
- Retention in Ningbo and Zhejiang: **Ningbo** remains the top employment city for PhD graduates from our university, with **31.17%** of those choosing to work in Ningbo and **42.86%** in Zhejiang province.

Analysis of International, Hong Kong, Macao, and Taiwan Graduate Destinations

- Overview of the destination: **30.77%** were pursuing further study, **69.23%** were direct to work. The employment rate of PhD graduates is **100.00%**.
- By location of employment: **33.85%** stayed in China, **66.15%** went outside of China.
- By type of company: Employers include large foreign and joint ventures, as well as renowned Chinese enterprises. Many master's and PhD graduates are employed at higher educational institutions, including Beijing Normal-Hong Kong Baptist University, the University of Birmingham, and the University of Nottingham Ningbo China.

Columbia University School of Engineering

Students from Nottingham Ningbo are dedicated to making the most of the school's resources to deepen their knowledge and pursue their passions both academically and professionally. We take great pride in seeing them push their boundaries in coursework, research, campus employment, and internships. Equipped with cutting-edge technology and guided by world-class faculty and researchers, they are prepared to make meaningful contributions to the world.

Campus Recruitment and Internship

Employer Presentation

Helping students understand recruitment information and industry development trends. Facilitating communication between companies and students and introducing high-quality employment opportunities to students.

Summer Placement Programme

Collaborating with well-known companies to foster talent development, establishing efficient and convenient university-company cooperation programmes, assisting students in quickly finding suitable internship positions, and enabling them to experience real-world job settings.

Postgraduate Career Fair

Through a series of customized services, such as Postgraduate Career Fair, Alumni Sharing, and Talent Policy Sharing, helping postgraduates understand the employment market and improve their employment competitiveness.

International Career Week

Actively providing all-round employment services for international students, including International Student Job Fair, International Career Forum, and Visa policy sharing sessions, enabling international students to better understand and adapt to the Chinese labour market.

Golden Interns Award

Building an internship communication and sharing platform across various fields and industries, supporting students to share their internship experiences through competitions, encouraging the power of role models, and encouraging students to actively take part in social internship practices.

Summer Company Visit Programme

In response to the Visiting Project issued by the Ministry of Education, led by university leaders, the Career and Employability Service visits various companies in conjunction with departments across campus. This activity deepens the understanding of recruitment projects and also enables companies to familiar with the situation of UNNC, helping both parties to develop internship, recruitment, and employability projects.

Personalised employment information and resources

Leveraging advanced data-driven analytics, the Careers and Employability Service digital platform delivers precision-targeted and personalized modular services, featuring automated interest-position matching and multi-dimensional resource allocation. This architecture ensures context-aware career resource distribution through algorithm-driven pattern recognition and needs prediction.

Tesla

During my interactions with the students from the University of Nottingham Ningbo China, I was deeply impressed by their positive and remarkable qualities. Their passion for their majors, open-mindedness, solid academic foundation, acute industry insights, and excellent teamwork skills all contributed to their unique charm and professional demeanor. Throughout the exchanges, they were highly active, posing questions that were not only profound but also inspiring, revealing their remarkable depth of thinking and outstanding potential. Witnessing the outstanding qualities of these young talents filled me with joy and anticipation. I sincerely look forward to more opportunities to collaborate in the future with these brilliant students and strive together to create remarkable achievements.

Employability Services

Career assessment

Providing professional career planning tools, conducting in-depth analyses of students' interests, personalities, motivations, and strengths, and helping to clarify their own career development direction.

1-on-1 Career advice service

Comprising career staff, industry experts, headhunters, further study consultants, and alumni, a team of over 70 career advisers offer 1-on-1 career advice to provide guidance on career paths and career choices.

Skills development

Over 90 interactive career skills workshops with diversified topics to enhance students' employability skills, such as leadership, communication skills, and strategic thinking.

Nottingham Advantage Award

A tri-campus learning platform providing more than 40 modules to enhance students' overall learning experience and employability.

AI career lab

Utilising advanced AI technology to provide all day CV and interview guidance and feedbacks which can effectively enhance students' application

Lifelong services

Alumni visits, alumni story sharing, and support for struggling students create an interactive network among university, companies and graduates, closely aligning employment services with social needs.

Careers and Employability Service Digital Platform

Providing a one-stop, precise, and personalised service encompassing multiple modules, including career planning, internships, further study planning, and job-hunting skills, supporting students in both employment and further studies.

Adam AL-AZZAWI

"I chose modules that I believed contribute to my learning and widen my horizons. They were an extension to my undergraduate course and provided me with the skills and opportunity to interact with people from different cultures and backgrounds."

Adam AL-AZZAWI, BSc Environmental Science, Vice-Chancellor's Global Graduate Prize

Further Study Services

Further study fair

Providing access to high-quality further study opportunities, connecting students with graduate schools, and enabling them to acquire official information through face-to-face interactions with recruitment officers.

Information sessions

Inviting recruitment officers from renowned graduate schools to hold information sessions that share detailed programme information and admission requirements, thereby assisting students in identifying their goals for further study.

Further study sharing

Inviting alumni who have enrolled in leading graduate schools to share their application advice and study experiences so as to help students facilitate their future study plans.

Planning and application sessions

Providing comprehensive guidance on further study application by covering a wide range of topics, including choosing universities for graduate schools, assembling an excellent post-grad application package, and writing personal statements.

Practice Test

Organising GRE and GMAT practice tests, simulating real test environments, helping improve students' performance in actual exams and enhancing their competitiveness in further study applications.

Individualised advising

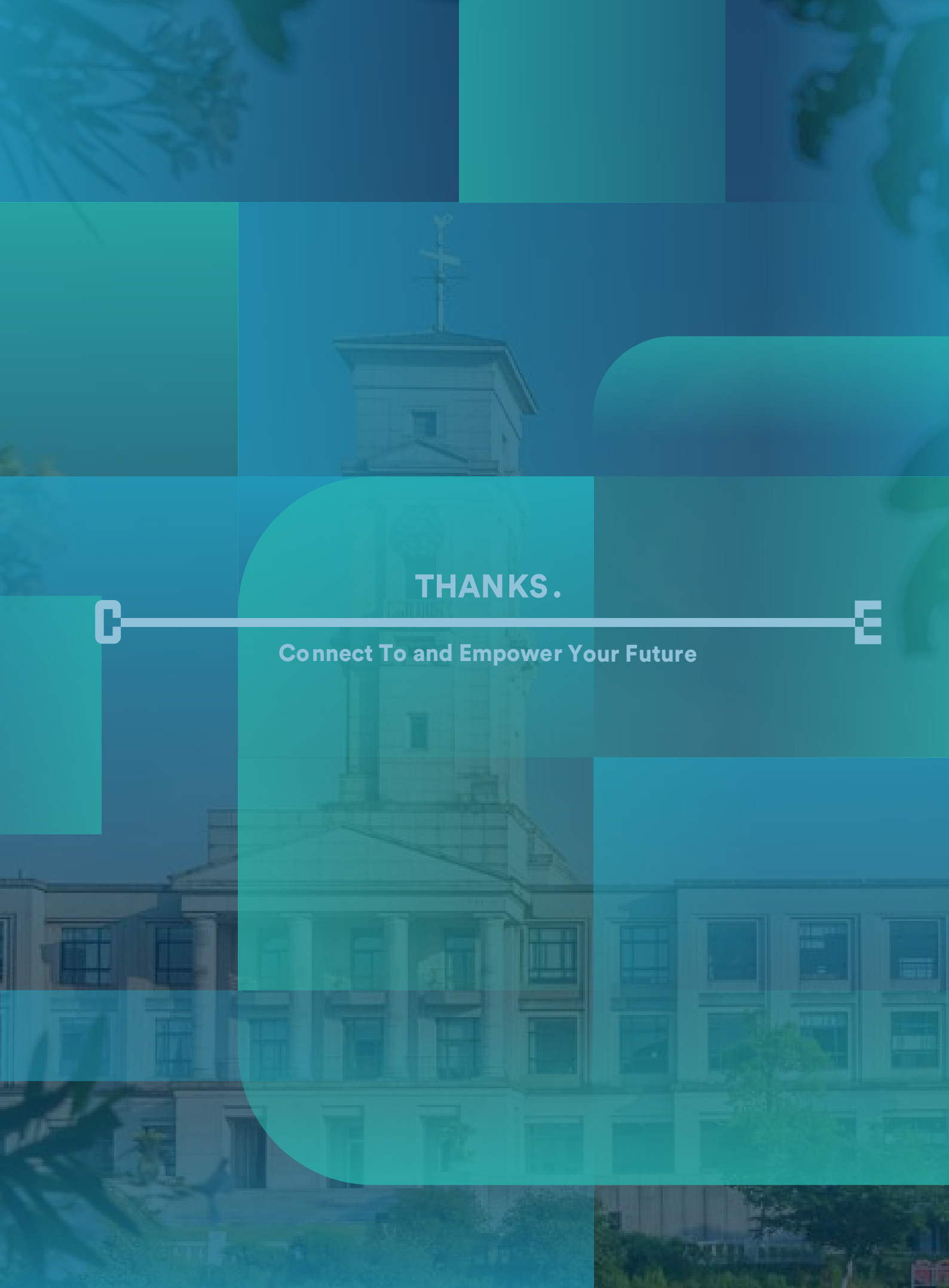
Students can book one-on-one appointments with further study counsellors to receive personalised and in-depth guidance on further study planning, school selection, and application preparation.

Further study planning module

Taking advantage of big data, this module not only assists students in precisely establishing self-positioning but also gives data interpretation for successful cases, serving as a powerful tool for UNNC students in their further study decision-making.

University College London

The students at UNNC left a strong and positive impression on me. They were highly engaging, actively participating in discussions and demonstrating a genuine interest in meaningful conversations. Their ability to articulate their thoughts clearly and confidently stood out, reflecting both strong communication skills and a well-rounded education. At the same time, their curiosity about the broader world was evident. They were eager to explore global perspectives, ask insightful questions, and understand the nuances of international education and career opportunities. The combination of intellectual curiosity, confidence, and dynamism makes UNNC students well-prepared for the opportunities and challenges of an increasingly interconnected world.



Contact Us

**Careers and Employability Service,
University of Nottingham Ningbo China**



Address: No.199 Taikang Ease Road, Ningbo City, Zhejiang Province, China



Postal Code:315100



Email: careers@nottingham.edu.cn