



University of  
Nottingham

UK | CHINA | MALAYSIA



2024

## Postgraduate Research Prospectus

University of Nottingham  
Ningbo China

宁波诺丁汉大学

# Get involved

 [Admissions@nottingham.edu.cn](mailto:Admissions@nottingham.edu.cn)

 +86 (0) 574 8818 0182

[nottingham.edu.cn](http://nottingham.edu.cn)



# It starts here

# Where it goes

# is up to you

1. Why University of Nottingham Ningbo China .....	4
2. Why China and Ningbo.....	6
3. Inspiring academics.....	8
4. What our students say.....	11
5. The Graduate School.....	14
6. Nottingham University Business School China.....	16
7. Faculty of Humanities and Social Sciences.....	18
8. Faculty of Science and Engineering .....	20
9. Entry requirements.....	22
10. How to apply.....	24
11. Tuition fees and scholarships.....	26
12. Doctoral training partnership.....	28
13. Careers and employability.....	30
14. Student experience.....	32
15. International campuses.....	34

Why Nottingham Ningbo?

# Unlock your potential with a quality international education

Opened in 2004 and located in the city of Ningbo on the east coast of China,

The University of Nottingham Ningbo China, the first Sino-Foreign university, is a leading international university.

The University of Nottingham is ranked in the top 100 in the world in the QS World University Rankings 2024



Two professors from the University of Nottingham won the

**Nobel Prize**  
in 2003

The University of Nottingham is ranked 7th in the UK for research power (REF).

**REF**2021 Research Excellence Framework

All students at the University of Nottingham UK, China or Malaysia will graduate with the same degree certificate.

For more information about our university, please visit:  
[www.nottingham.edu.cn/en](http://www.nottingham.edu.cn/en)

Choose from more than

**100**  
student-run clubs and societies

The University of Nottingham secured a double award as University of the year for both International and Sports in the 2019 guide.

In 2021 the guide once again has named the University of Nottingham the best university in the UK for sports.



The Times and The Sunday Times Good University Guide 2021



All our degree programmes are taught in English

Exchange and study abroad programmes with

more than **140** partners in around

**40** countries and regions



Our city was ranked in

**Forbes**

list of the top cities for business in China

Staff and students from about

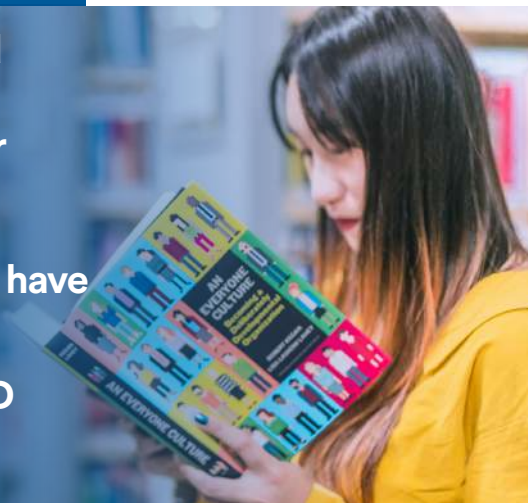
**70** countries & regions



We were awarded a licence to grant PhDs in December

**2008** and have

over **700** PhD students.



Our Engineering and General Social Science degrees are ranked in the

top **0.27%**

and **1%** of ESI global rankings, respectively

Our academic staff are either seconded from Nottingham UK or appointed to the University of Nottingham's standards

A wide variety of PhD scholarships



## Why Ningbo?

Ningbo is located in Zhejiang province on the south shore of Hangzhou Bay, just under two hours away from Shanghai. It is recognised as one of the best cities for safety, affordability and job growth in China.



## Easy gateway

The city's excellent transport links by bus, train and air means that Ningbo is easy to explore and an ideal base from which to visit China and the rest of Asia.



Ningbo is the birthplace of the Hemudu culture. The birthplace of the Hemudu culture

A famous international port city

The capital of Eastern civilisation



## Facts

Nearly 7,000 years old, populated with over 7.6 million people and covering around 1,033sq km, Ningbo is a rapidly growing city. It was ranked in Forbes' list as one of the top cities for business in China and is a thriving blend of enterprise, culture, education, tradition and entertainment.



Such experiences, combined with a highly ranked UK degree, allow our students to obtain impressive and sought after CVs. Knowledge of China is increasingly desired by employers in today's globalised world. The University of Nottingham Ningbo China offers students the opportunity to gain this first-hand experience from a world-class British university.

## Culture

Ningbo offers the opportunity to feel right at home among an array of international shopping outlets, restaurants, clubs and bars, while hosting international sports and music events. It also provides the chance to embrace culture and tradition – temples and intricate streets house markets selling a variety of antiques, textiles and delicious Ningbo cuisine. National and local festivities show the delights of Chinese culture while a number of museums and exhibitions represent the city's historic past and innovative future.



# Gain first-hand experience in China

Studying in China offers you the chance to embrace a new culture, study a new language and learn about a country which has one of the largest economies in the world.

## Food

Ningbo is home to an international community, and is well stocked with restaurants from all corners of the globe. Indian, Italian, Lebanese, Turkish, Japanese, Korean, Thai and Mexican are just a few of the cuisines available in Ningbo.

There is also a wide variety of food and drink options available on campus. Ranging from Chinese staples and specialities to Subway, Starbucks, Japanese and Korean food, there is something to suit every taste and wallet.

China's extensive well developed online shopping allows easy access to imported goods and a taste of home.



To see more about Ningbo, visit

<https://www.nottingham.edu.cn/en/index.aspx>

Search:



Ningbo

# Inspiring academics



Professor Alain Chong

Dean of Graduate School and Global Engagement  
Professor in Information Systems

**Research interests:**

Technology adoption, Social Media, Mobile Commerce, Fintech, Digital Platform, Disruptive Technologies, e-SCM

Professor Margaret Gillon Dowens

Professor of Psycholinguistics UNNC,  
Director, Cognitive Neuroscience of  
Language Laboratory (CNLL), School of  
Education and English

**Research interests:**

Psycho/Neurolinguistics, Bi/Multilingualism,  
Aging and Language, Neuromarketing







Dr. Celia Lam

Associate Professor in Media and Cultural Studies, School of International Communications

**Research interests:**

Aesthetics of digital media production, Audience and fan experience and uses of digital media, Celebrity culture

Professor Hing Kai Chan

Acting Associate Dean for Education & Student Experience, Professor of Operations Management  
Nottingham University Business School  
China

**Research interests:**

Production and operations management, Logistics and supply chain management, Scheduling, Intelligent manufacturing, Smart supply chain, Technology adoption



## Professor Giampaolo Buticchi

Interim Vice Provost for Research and Knowledge Exchange, Professor in Electrical Engineering (Power Electronics, Machines and Drives)

### Research interests:

DC distribution systems and power electronics for the More Electric Aircraft. High performance electric drives.



## Professor Jim Greer

Chair Professor in Engineering Physics

### Research interests:

Study of materials in the regime where quantum mechanical effects begin to dominate electronic device behaviour; Design of emerging electron devices for beyond classical CMOS integration; Treatment of electron-electron correlation for determining current-voltage characteristics on the nanoscale; Surface effects in nanowires and other low-dimensional systems; Semimetals for electronics; Atomic scale models for nanowire transistors and interconnects



# What our students say

“

Frankly speaking, as much excited about research, I embarked on this journey to pursue a with self-doubts and confusion; however, I soon realised I was in good hands as I arrived at UNNC. The Faculty of Social Sciences and Humanities offers me a close-knit research community where I have been constantly inspired by the knowledge-driven exchanges with world quality researchers as well as keen fellows in my PhD cohort. Particularly, I have been fully supported by my kind supervisors in both academic skills for my current research project and extra soft skills that prepare for my future career in academia. ”

**Nguyen Ngoc Thao Le**  
PhD in History & Politics



“

UNNC provides an incredible research environment for accepting rigorous academic training in completing a PhD. Joining one of the world-leading behavioural economics research groups and working with some of the preeminent economists means that you are exposed to the most brilliant ideas and research methodologies all the time. This is exciting, and always motivates you to conduct the best and brightest research to uncover the rules of society, to deepen the understanding of human behaviour, and to impact the future of the world. It is hard to think of a better institution to achieve your academic goal as a junior researcher. ”

**Ying Chen**  
PhD in Behavioural Economics



“

A doctoral program is a journey full of exploration but also of difficulties that one has to overcome. UNNC has been a wonderful place where I was given all the necessary resources to pursue my research at ease. Supervisors are always encouraging and supportive of their students, helping them also navigate different aspects of a PhD life. Graduate School provides us also with opportunities to hear from and meet renown scholars in our various field. Beyond the academic life, UNNC has also provided me the opportunity to attend languages classes free of charge and I was able to learn a new language. I am convinced that choosing UNNC was and will be a life defining moment in my life for the doors it has opened. ”

**Tanguy Tresor Sindihebura**  
PhD in Strategy



“

The path to completing a PhD has always been said to be full of highs and lows. Very fortunately for me, I've got to experience highest of 'highs' and was able to overcome the lowest of 'lows' thanks to a strong support system consisting of my supervisors, family and friends here in China. I have already and will continue to express my gratitude to my husband Dani, my family and circle of close friends for supporting me over the course of this journey. I would like to take this opportunity to also thank my supervisors, Professor David Phang, who is not only my academic mentor but my role model in life; as well as Professor Alain Chong, for seeing potential in me at a time when I believed I had none. Thank you both so much. I would also like to thank the unsung heroes at Graduate School, for working tirelessly to make our experience as PhD students a smooth and pleasant one. It is bittersweet to embark on a new chapter that is full of promises but also uncertainties – but if we've managed to power through to get our PhDs, I'm confident we can power through anything! ”

**Dr. Camen TEH (Graduated in 2023)**  
Assistant Professor in Marketing, NEOMA Business School



“

I am sincerely grateful for the opportunity and scholarship offered by UNNC to explore cutting-edge technologies in the context of advanced electric propulsion for aircraft. Benefiting from the multidisciplinary research environment at UNNC, I have been able to fully devote myself to scientific research without much constraints and have been able to obtain remarkable academic achievements in just three years. Meanwhile, life here is vibrant and diverse, providing many options for complete relaxation following rigorous scientific research. Thanks to UNNC and welcome to join this innovative research community. ”

**Han Zhao**

PhD in Electrical and Electronic Engineering

“

I really enjoy my PhD journey at UNNC. Throughout my PhD research, I have received a great deal of support and assistance. I would like to express my utmost appreciation to my PhD supervisor, Professor Xiaogang Yang, for his expert guidance and enthusiastic encouragement. I also appreciate the unlimited support from my family and friends, especially during the difficult time when I have had to continue my research remotely since the beginning of the COVID-19 pandemic.

Pursuing a PhD has always been one of my life goals, and I am now happy to say that I am a PhD graduate. I hope you achieve all your life goals and make some beautiful memories along your life journeys. ”

**Dr. Chee Yap CHUNG (Graduated in 2023)**

Postdoctoral Research Fellow, Fudan University



# The Graduate School

We welcome top quality PhD applications all year round. To ensure you will be able to register on your intended date, please submit your application at least 3 months in advance. For more information, please visit:

[www.nottingham.edu.cn/en/graduateschool](http://www.nottingham.edu.cn/en/graduateschool)



“At the Graduate School, you are joining our community of world-class scholars, outstanding students and aspiring early career researchers. We aim to produce future leaders through our innovative and rigorous research trainings, as well as providing excellent learning support and research experience through our modern libraries, labs and training centres.”

**Professor Alain Yee Loong Chong**

Professor of Information Systems, Dean of Graduate School and Global Engagement



## PhD scholarships

University of Nottingham Ningbo China (UNNC) offers a wide variety of scholarships to potential PhD students seeking to study at UNNC. In addition to faculty scholarships, we also offer strategic research and other scholarships.

**For more information, please visit:**

[www.nottingham.edu.cn/en/graduateschool](http://www.nottingham.edu.cn/en/graduateschool)

## Research training

Research training is an important element of the Postgraduate Research Programme at UNNC. Postgraduate research is a process of personal development involving more than your specific research topic. Students are expected to acquire skills and knowledge in areas wider than their research topics as well as generic research, presentation and IT skills to enhance their personal development. The University concentrates on providing the training to ensure that all PGR students develop as rounded researchers, with skills and experience beyond those integral to their individual research topic.



# Nottingham University Business School China

Welcome to Nottingham University Business School China (NUBS China).

Uniqueness of our PhD degree programme:

- **Rigorous Research Training:** Our PhD programme combines taught modules with personal research supervised by at least two academic staff.
- **International Diversity:** Current PhD students come from 10 different countries/regions and research supervisors from more than 20 countries/regions.
- **Scholarships:** A growing number of full scholarships covering tuition, medical insurance, housing and living costs are available. Application is competitive.
- **Teaching Opportunities:** We offer teaching training and Graduate Teaching Assistant (GTA) opportunities to our students to help prepare for an academic career.

## Research areas in PhD programmes include:

### Accounting

Environmental accounting and disclosure, Taxation, Audit and assurance, Financial reporting, Management accounting and decision making, Corporate governance, Accounting and information system.

### Economics

Foreign direct investment, International macroeconomics and trade, Environmental and energy economics, Financial economics, Applied econometrics and forecasting, The Chinese economy, Microeconomics, Spatial economics, Behavioral and experimental economics, Banking, Sustainable and inclusive finance

### Entrepreneurship and Innovation

Governance in science, Technology and innovation, Start-ups, Family business, Entrepreneurial platforms and ecosystems, Economics of innovation



## Finance

Corporate finance, Asset pricing, Capital markets, Fintech, International finance, Entrepreneurial finance, ESG Investing, Applied financial econometrics

## Information Systems

E-commerce, Mobile commerce, Digital platforms, Business analytics, Social media, E-health, Healthcare information systems, Fintech, Design science, Digital ventures, Artificial intelligence, Blockchain implementation, Augmented reality applications, Sustainable digital ecosystems

## Operations and Supply Chain Management

Strategic sourcing, Sustainable supply chains, Supply chain innovation, Supply chain optimization, Social and environmental supply chain, Made-in-China 2025, The Belt and Road initiative, Supply chain finance

## Marketing

Services marketing, Consumer behaviour, Transformative potential of digital innovation, Retail management, Digital marketing, Customer experience management, Tourism and hospitality management, Service ecosystem, Sustainable marketing

## Organisational Behaviour and Human Resource Management

Ethics and responsible management, Employee attitudes, behaviour, well-being and performance, Labour relations, Human resource management, Leadership and team dynamics


## International Business and Strategy

Global strategy and organisation of MNEs, International management, Foreign direct investments, Management in emerging economies, Strategic management, Innovation



At Nottingham University Business School China, we are committed to training the next generation of business scholars. We offer PhD opportunities in many areas of business with supervisors available for a wide range of interests and with excellent facilities on campus.

**For more information, please visit:**  
[www.nottingham.edu.cn/en/business](http://www.nottingham.edu.cn/en/business)



Study with us

# Faculty of Humanities and Social Sciences

Welcome to the Faculty of Humanities and Social Sciences (FHSS).

Our commitment to developing and delivering innovative, theoretically informed, empirically grounded, and often interdisciplinary research means FHSS is an outstanding place to study the humanities and social sciences.

Our highly ranked Schools enjoy an international reputation for research excellence, with staff regularly invited to talk about their work at major conferences across the world. They are also sought by policy-making communities and they comment regularly in the international media.

Our staff and postgraduate students engage in research on some of the most urgent challenges facing society: from intercultural communication to applied linguistics; from China's place in the world to the relevance of 'soft power'; from the impact of the ancient Silk Roads to the formation of the Belt and Road Initiative; from models of International Higher Education to health economics; from how virtual reality is affecting our understanding of national heritage to issues of copyright in the digital age. The humanities and social sciences help us understand who we are, how we relate to our surroundings and each other, and how we can contribute to solving some of the world's most pressing problems.

## Research areas in PhD programmes include:

### Education and English

Action research, Applied linguistics, Approaches/Theoretical orientations, Continuous professional development, Corpus linguistics, Discourse analysis, Educational/Language assessment, Educational leadership and management, English for academic purposes and English for specific purposes, General English language education, Higher education, Intercultural communication, Literary studies, Mentoring and coaching, Multilingualism, Online/Digital education, Pedagogy, Policy, Professional learning community, Psycholinguistics/Cognitive neuroscience of language, School improvement, Sociolinguistics, Teacher development, Translation and interpreting studies, Second language acquisition, TESOL, Systemic functional linguistics, Textual analysis

### Economics

Macroeconomics, Microeconomics, Econometrics, International trade, Foreign direct investment, Economics of regional integration, Tourism economics, Development economics, Economics of emerging economies (e.g., China & African countries), Mathematical economics, Game theory, Financial economics, Public economics, Health economics, Education economics, Environmental economics, Labour economics, Behavioural economics

## International Communications

Asian studies, Chinese studies, ICT for gender empowerment, AI for social good, Audience and fan studies, Celebrity studies, Jewishness and Israel, Media and conflict, Digital culture and heritage, Game studies, Journalism studies, Virtual and augmented reality, Social media and cyber behaviour, Southeast Asian studies, Mobile studies, Creative industries, Film and television studies, Critical blockchain studies, Short form video studies, Ethnicity and media technology, Cultural studies and critical theory, Cultural studies and digital media, Media and migration, Media convergence, Queer studies, Political communication, Critical discourse studies, Political economy of communication and media, Screenwriting studies, Documentary studies, The metaverse and society, Virtual and augmented reality, Media discourse studies, Strategic communication, Technology and society

## International Studies

International relations, public policy, world history, cultural history, international relief, international organizations, refugee and migration studies, regional studies (East Asia, Eurasia, Europe, Africa)

You will find there all the subjects that we research, but if your interest is not listed, don't worry: we are also interested in supervising a range of topics that may not be included on our webpage, so please do contact us for more information or if you have any questions. We are always happy to hear from you and to discuss your research ideas.

### For more information, please visit:

[www.nottingham.edu.cn/en/humanities-and-social-sciences](http://www.nottingham.edu.cn/en/humanities-and-social-sciences)

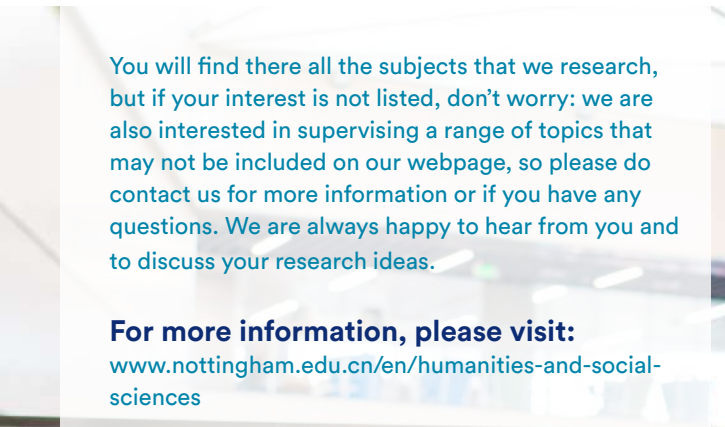
## Professional Doctorate in Education (EdD)

This programme is an exciting opportunity for experienced education professionals to develop the critical knowledge and skills necessary to undertake their own research and thereby improve their educational practices and contexts.

### Programme structure

The Professional Doctorate in Education (EdD) will recruit for a September start each year. Students will normally take a minimum of four years part-time to complete the degree although students may take up to six years. The programme is divided into two Parts and candidates will be awarded the Professional Doctorate if they successfully complete Part II by submitting a thesis or portfolio of 50-60,000 words and undergo a viva voce examination. Progression to Part II is predicated upon successful completion of Part I.

For more information, please scan the QR Code:



Study with us

# Faculty of Science and Engineering

Welcome to the Faculty of Science and Engineering (FoSE).

FoSE offers a variety postgraduate research programmes including Master of Research (MRes) and PhD programme. MRes degrees aim to impart advanced knowledge in the specialist areas of science and engineering as well as generic transferable skills in research methods and project management in order to allow candidates to engage in innovative research and development. Compared to MSc programmes, MRes emphasizes more on the research and targets the students wishing to progress to PhD degree programme to pursue an academic or industrial career. PhD programme offers flexible supervision between University of Nottingham Ningbo China (UNNC) and University of Nottingham, UK. Students will be registered at UNNC, and graduates will be awarded a University of Nottingham, UK degree which is also recognised by the Chinese Ministry of Education.

**For more information, please visit:**  
[www.nottingham.edu.cn/en/science-engineering](http://www.nottingham.edu.cn/en/science-engineering)

## Master of Research

**MRes (Master of Research)**  
in Sustainable Energy and Building Technologies

**MRes (Master of Research)**  
in Chemical Engineering and Technology

**MRes (Master of Research)**  
in Innovative Product Design and Manufacture

**MRes (Master of Research)**  
in Smart Construction

**MRes (Master of Research)**  
in Environmental Science and Engineering

**MRes (Master of Research)**  
in Material Science and Engineering

**MRes (Master of Research)**  
in Mechanical Engineering

**MRes programmes enquiry:**  
Email: [Admissions@nottingham.edu.cn](mailto:Admissions@nottingham.edu.cn)  
Tel: +86 (0) 574 8818 0182

# Research areas in PhD Programmes include:

## **Advanced Energy and Environmental Materials & Technologies**

Advanced composite materials, Granular materials and geotechnology and New energy and environmental materials

## **Advanced and Intelligent Manufacturing**

Conventional & non-conventional material removal processes, Processes for adding materials, Modelling, Dynamics and control of manufacturing processes, Reactive manufacturing processes, Automation of manufacturing processes and process planning and lean production

## **Artificial Intelligence and Optimisation**

Computational Intelligence, Computer vision and image processing, Transportation analysis and optimisation, Big data, Health informatics and biomedical informatics, Data mining, Machine learning, Software testing, Computer security, Computability and complexity analysis, Internet of thing, Algorithms, Logic, Information visualization, Human-computer interaction, Edge computing, Deep reinforcement learning, 5G, Intelligent sensors, Computational economics

## **Composites**

Carbon fiber reinforced composites for aerospace, Electrically conductive composites, Lightning-strike-protection composites, Biomedical composites and application, Bio-sourced resins and green composites, material recycling, Composite manufacturing, Composite modelling and simulation, Structural damping composites, Fire-retardant materials, Noise absorbing and acoustically dark materials, 3D printing of composites, Thermoplastic composites

## **Fluids and Thermal Engineering**

Micro/nanoscale flows, Mass and heat transfer, Design of microfluidics and lab on a chip, Thermal management for energy systems, Multiscale (micro, meso and macro) modeling, Physicochemical transport processes in energy conversion and storage devices (batteries, fuel cells, Internal combustion engines and supercapacitors), Kinetic theory of gases, Space micropropulsion, Multiphase flows and heat transfer, Sustainable energy technologies, Machine learning approaches for thermofluids and energy analyses, Gas turbine aerodynamics and heat transfer, Multidisciplinary design optimization for aircraft and gas turbine design, Aerodynamic and aeroacoustic design of UAM electric propulsion systems

## **Science and Engineering Education**

Digital transformation in higher education, Online and blended learning, The future of engineering education, Scholarship of teaching and learning, Development of engineering educators, Engaging undergraduate students in research, Student-centered learning environments, Data-driven engineering education, Lifelong learning in a changing world, Game-based learning and gamification for engineering education, Lab concepts (traditional, online, remote, pocket) in engineering education, University and industry/institutions and connections

## **Geospatial and Geohazards**

Engineering surveying and space geodesy, Remote and in situ measurement, Positioning and navigation technologies, Building information modelling and management, Remote sensing, Geographic information science, Geospatial and environmental data science, Geohazards

## **Natural Resources and Environment**

Air quality and pollution control, Urban climate change, Water quality and wastewater treatment, Aquatic resource and soil management, Solid waste management and treatment

## **Partial Differential Equations**

Nonlinear partial differential equations, Calculus of variations, Nonlinear analysis, Rearrangement optimization problems, Free boundary problems, Free discontinuity problems, Regularity of solutions, Fractional differential equations, Shape optimization problems, Eigenvalue problems, Overdetermined and symmetry problems, Numerical analysis, Finite element methods, Error estimates, Mathematical modeling, Blow up problems in fluids, Navier-Stokes equations, Pattern formation, Asymptotic methods, Childress conjecture on the Keller-segel model and their generalization for several chemotactic species

## **Power Electronics, Machines and Control**

Power electronics, Novel electrical machine Topologies, Drive control, Mechanical design, Thermal management, Diagnostics and health monitoring, Power converter, More electrical aircraft, Aerospace electrification, New energy vehicle, Transport electrification, Servo motor drive

## **Sensor, Sensor Networks, and Instrumentation**

Health and wellbeing (Medical imaging, OMICS, Health monitoring), Smart systems (Smart home/office, Smart vehicle, Smart health), Applications of sensors and instruments (Diagnostics, Prognostics, Optimization)

## **Sustainable Built Environment**

The SBE Research Group aims to promote multi-disciplinary research across two broad research themes: Architecture and urbanism (A + U), and Architectural Engineering, Environmental Design and Energy (AEEDE). Among the many research topics that arise from the built environment, the following are of particular interest to the SBE Research Group:

- Architectural humanity and history across various cultures, climates and geographic locations;
- Past and contemporary urban transition and related sustainability issues in China and beyond;
- Identification of best practices in the area of sustainable building and city development;
- High performance building technologies and system integration

# Research degree admissions requirements

To apply for a PhD programme, you will generally need to hold an honours degree at 2.1 and/or a masters at merit level or above in a relevant subject (or international equivalent).

For particular requirements regarding certain programmes, please refer to:

[www.nottingham.edu.cn/en/graduateschool](http://www.nottingham.edu.cn/en/graduateschool)



# English entry requirement

Students whose first language is not English or their entry qualifications were not obtained from a country/region where English is the native language, are required to provide satisfactory evidence of their proficiency in English.

Qualification	English Studies, Education	Science and Engineering	Business, Humanities and Social Sciences
IELTS	7.0 (minimum 6.0 in all elements)	6.0 (minimum 5.5 in all elements)	6.5 (minimum 6.0 in all elements)
PTE academic	76 (minimum 65 in all elements)	65 (minimum 59 in all elements)	71 (minimum 65 in all elements)
TOEFL (IBT)	100 (minimum 19 in Writing and Listening, 20 in Reading and 22 in Speaking)	80 (minimum 17 in Writing and Listening, 18 in Reading, 20 in Speaking)	90 (minimum 19 in Writing and Listening, 20 in Reading and 22 in Speaking)
Cambridge Proficiency/ Advanced test (CAE)	190 with no element below 169	169 with no element below 162	184 with no element below 169

- Grades/scores are valid for a maximum period of two years prior to the date of registration.
- IELTS 6.5 (minimum 6.0 in all elements) or its equivalent is required for Faculty of Science and Engineering (FoSE) scholarship applicants.

# How to apply for a research programme

This step-by-step guide takes you through the application process for our research programmes.

1

## Investigate our postgraduate opportunities

Prior to applying, you should thoroughly research prospective programme and select one that best suits your research interests and career goal.

2

## Identify a supervisor

Please consult the academic staff profiles listed on the relevant department or school's website and contact a potential supervisor whose research interest aligns with yours.

3

## Check entry requirements

Entry requirements depend on the course and are detailed in our course.



4

## Check key dates

Research programmes usually recruit postgraduate students at multiple points throughout the year. Please check the entry and closing dates for the programme you are applying for.





5

## Scholarship availability

Scholarships are detailed in our website [www.nottingham.edu.cn/en/graduateschool](http://www.nottingham.edu.cn/en/graduateschool)

6

## Research proposal

Your application will usually include a research proposal explaining your research plans. This will help us to assess the quality of your application and, if you have not already done so, identify academics who could supervise your research. Find out more at [www.nottingham.edu.cn/en/graduateschool](http://www.nottingham.edu.cn/en/graduateschool)



7

## Apply for funding

It's essential that you have made contact with a UNNC supervisor who has agreed to supervise your research project and support your application for a scholarship before submitting your application.



8

## Submit an application

All applicants for a postgraduate research programme must submit their applications and supporting documents on Application HUB (<https://oaas.nottingham.edu.cn/recruit/login>)

### 2024-2025 Academic year

Entries	Application Deadlines	Registration
Sept 2024 (MRes, EdD and PhD)	10 June 2024	14 Sept 2024
Feb 2025 (PhD only)	31 Oct 2024	17 Feb 2025

If you are applying for a PhD scholarship, please refer to each scholarship's deadline.

## Contact us



[Admissions@nottingham.edu.cn](mailto:Admissions@nottingham.edu.cn)



+86 (0) 574 8818 0182



[www.nottingham.edu.cn/en/graduateschool](http://www.nottingham.edu.cn/en/graduateschool)

# Tuition fees and scholarships

## Tuition fees

	2024/2025 Academic Year Entry
PhD programmes	110,000RMB per year
EdD programmes	55,000RMB per year
MRes programmes	Mainland Chinese, Hong Kong, Macau & Taiwan students 100,000 RMB per year International students 110,000 RMB per year

## PhD scholarships

University of Nottingham Ningbo China (UNNC) offers a wide variety of scholarships to potential PhD students seeking to study at UNNC. In addition to faculty scholarships, we also offer strategic research and other scholarships. More information can be found at

[www.nottingham.edu.cn/en/graduateschool](http://www.nottingham.edu.cn/en/graduateschool)

### How to apply the scholarships?

No separate application is required for applying for a scholarship but please make sure you quote the scholarship reference number in your PhD application form. It normally takes 8-10 weeks for a final decision to be made after the closing date.

1. Alumni and Family Scholarship
2. Faculty Scholarships
3. Doctoral Training Partnership (DTP) Scholarships
4. High Flyer Scholarships
5. Strategic Research Scholarships
6. New Materials Institute (NMI) Scholarships
7. China Beacons Institute (CBI) Scholarship

## Other costs

**Living & on-campus accomodation costs:** 11,000 RMB per year + 1,000 RMB deposit for International Residence Building 11 (updated: September 19, 2023).

**Commercial insurance fee for all registered students shall be covered by the University.**

Please note that other costs will be subject to change and for updated information visit: [www.nottingham.edu.cn/en](http://www.nottingham.edu.cn/en)



# Doctoral training partnership

In order to cultivate world-class PhD talents with an international perspective and skill-set, and to further enhance the research impact of UNNC, Graduate School initiated the establishment of Doctoral Training Partnerships (DTPs) with institutions that have a reputation for excellent research since September 2017.

The uniqueness of the DTP programmes is that they capitalise on the academic strengths, available resources and facilities of both UNNC and the partner institutions. Therefore, DTP students will receive supervision and guidance from the academic and professional staff from both parties and enjoy the dual resources and facilities. Furthermore, the DTP programmes are great initiatives to expand collaboration into other areas with the existing partners as well as attract new partnerships in the future.



中国科学院地理科学与资源研究所  
Institute of Geographic Sciences and  
Natural Resources Research, CAS



中国科学院城市环境研究所  
Institute of Urban Environment, Chinese Academy of Sciences



山东大学  
SHANDONG UNIVERSITY



中国科学院上海高等研究院  
SHANGHAI ADVANCED RESEARCH INSTITUTE, CHINESE ACADEMY OF SCIENCES



甬江实验室  
YONGJIANG LABORATORY



中国科学院上海药物研究所  
Shanghai Institute of Materia Medica  
Chinese Academy of Sciences



**CNITECH**



**中国科学院深圳理工大学**  
SHENZHEN INSTITUTES OF ADVANCED TECHNOLOGY  
CHINESE ACADEMY OF SCIENCES



**浙江大学**  
ZHEJIANG UNIVERSITY



**南方科技大学**



**浙江大学机械工程学院**  
SCHOOL OF MECHANICAL ENGINEERING ZHEJIANG UNIVERSITY



**中航复合材料有限责任公司**  
AVIC COMPOSITE CO., LTD.



**深圳大学**  
SHENZHEN UNIVERSITY



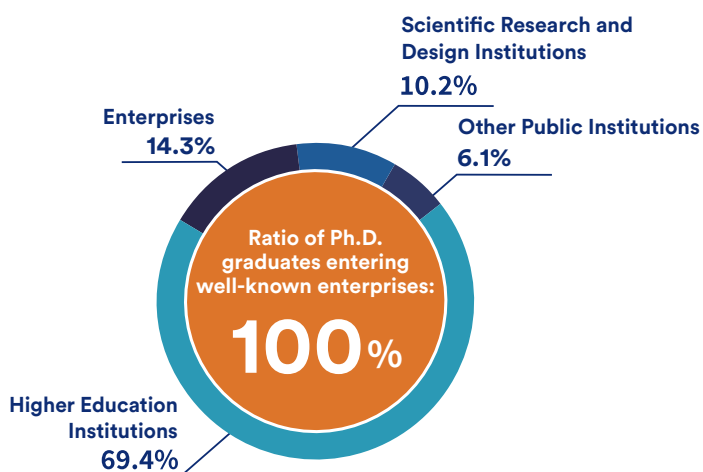
**浙江财经大学**

# Careers and employability

The University's Careers and Employability Office collected the destination data of domestic Ph.D. graduates who graduated in 2021, and received 49 valid responses, with a response rate of 98.0%. The number of people who found jobs was 49, with an employment rate of 100.0%.

In terms of regional distribution, 51.0% of the Ph.D. graduates chose to stay in Zhejiang and 40.8% chose to stay in Ningbo. 49.0% of the graduates chose to work in Guangdong, Shanghai, Jiangsu, and other places, among which 2.0% chose to go to Hong Kong SAR for post-doctoral research and 2.0% went to foreign universities for research work.

In terms of the type of company, our Ph.D. graduates are concentrated in the fields of research and teaching, and they are especially favoured by universities and colleges. 69.4% of our doctoral graduates are employed in universities and colleges in teaching and research positions. 16.3% of our graduates are engaged in public institutions, scientific research and design institutions, and medical and health units. Another 14.3% of Ph.D. graduates went to work in enterprises. The rate of our 2021 doctoral graduates entering famous enterprises is 100%.



Company Type	Examples of employment companies and institutions
Higher Education Institutions, 69.4%	University of Nottingham Ningbo China, University of Westminster, Guangdong Technion-Israel Institute of Technology, Xi'an Jiaotong-Liverpool University, Zhejiang University, Shanghai University, Southern University of Science and Technology, Hainan University
Enterprises, 14.3%	Tesla Shanghai Co., Ltd., Northeast Securities Co.,Ltd., Pharmaron Ningbo Technology Development Co.
Other Public Institutions, 6.1%	Party School of the CPC Henan Provincial Committee
Scientific Research and Design Institutions, 10.2%	Ningbo Institute of Materials Technology and Engineering, Chinese Academy of Sciences, Institute of Advanced Information Technology, Peking University

Table 4.1 Examples of employment companies for the 2021 Ph.D. graduates



UNIVERSITY OF WESTMINSTER



南方科技大学  
SOUTHERN UNIVERSITY OF SCIENCE AND TECHNOLOGY



中国科学院  
CHINESE ACADEMY OF SCIENCES



浙江省北大信息技术  
高等研究院



# Experience it in a world beyond ordinary

**A vibrant UK-style high street is a popular gathering point on campus. Facilities include a post office, dry cleaner, supermarket, grocery store selling imported goods, hair salon and several restaurants, including one selling Halal and Arabic options. Shopping centres, entertainment facilities and other amenities are all within walking distance or a short bus or taxi ride from the campus.**

## Your opportunity to study abroad

We have various study abroad programmes with about 140 partners in 40 countries, as well as our campuses in the UK and Malaysia. We offer a range of study abroad opportunities with students having the option to live and study in another country as part of their university study. Studying or working abroad is a fantastic opportunity to broaden your horizons, experience different cultures, and develop the key skills that employers are looking for. Find out more: [Nottingham.edu.cn/en/studyabroad](http://Nottingham.edu.cn/en/studyabroad)

## Food and drink

You can choose from a range of canteens on campus, including one that specialises in halal cuisine and several that offer a wide array of Chinese staples and specialities. Some students opt to cater for themselves and make use of the supermarkets in Ningbo, many of which offer products for western tastes.



## Sport

We have a range of sports facilities on campus which are open to all students, from serious athletes to casual competitors. Our outdoor facilities include a 400-metre track, an athletics field, badminton courts, basketball courts, a grass football pitch, synthetic tennis courts and volleyball courts. Indoor facilities include: badminton courts; squash courts; a basketball court; rooms for gymnastics, table tennis, taekwondo and wushu; a volleyball court. Several swimming pools are within walking distance of the campus and nearby parks are popular with runners.

If you want to get involved in competitive sport, there are opportunities including the annual Tri Campus Games. Students from our campuses in China, Malaysia and the UK compete for the Tri Campus title. The games are held on a different campus each year and are a huge event in the University's sporting calendar.



## Student clubs and societies

There are dozens of clubs and societies to join, with events year-round for the serious-minded and fun-loving alike. You can choose to get involved in a range of activities, from taking part in martial arts to joining the student television channel's production team. Drama, dance and musical talents are also catered with student festivals and talent shows providing additional entertainment on campus.



## Your support network

Throughout your university journey there will be numerous people on hand to support and advise you, including tutors and dedicated staff. We have The Hub, Department of Campus Life and Student Engagement Office which provide a range of support, information and specialist services. Find out more: <https://www.nottingham.edu.cn/en/study/support-services>



# Be part of a globally connected university

The University of Nottingham is a top 100 university in the QS World Rankings. It is one of the most beautiful campuses in the UK and winner of 14 Green Flag Awards.



Portland Building



## Malaysia campus



Student Association



Faculty of Engineering



# UK campus



Find out more about all our campuses:  
[nottingham.ac.uk/go/campuses](https://nottingham.ac.uk/go/campuses)



宁波诺丁汉大学  
University of Nottingham  
Ningbo China

## Contact:

Student Recruitment and Admission Office  
Room231, Trent Building  
University of Nottingham Ningbo China  
199 Taikang East Road, Ningbo, 315100, China



[admissions@nottingham.edu.cn](mailto:admissions@nottingham.edu.cn)



+86 (0) 574 8818 0182



Graduate School UNNC  
WeChat Account



Student Recruitment and  
Admission Office  
WeChat Account

The University of Nottingham Ningbo China has made every effort to ensure that the information in this prospectus was accurate when published. Please note, however, that the nature of the content means that it is subject to change from time to time, and you should therefore consider the information to be guiding rather than definitive.