



## Meet our inspiring research teams



**Jim Greer**

**Chair Professor in Engineering Physics**

**Research areas:**

Low-dimensional materials for sensing, Electrical characterisation, Intelligent sensors, Electronic structure calculations, Charge transport models.

**Email:**  
[Jim.Greer@nottingham.edu.cn](mailto:Jim.Greer@nottingham.edu.cn)



**Xiaolei Fan**

**Professor in Green Chemicals and Energy**

**Research areas:**

CO<sub>2</sub> valorisation, Biomass valorisation, Synthesis of hydrogen carriers, Non-conventional energy-efficient catalysis.

**Email:**  
[Xiaolei.Fan@nottingham.edu.cn](mailto:Xiaolei.Fan@nottingham.edu.cn)



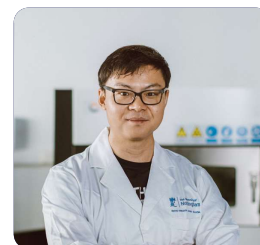
**Michael Wormstone**

**Professor in Life Science and Healthcare**

**Research areas:**

Human cell and tissue culture models, cataract, cataract surgery, wound healing, posterior capsule opacification, IOL testing and development, growth factor signaling, fibrosis, oxidative stress.

**Email:**  
[Michael.Wormstone@nottingham.edu.cn](mailto:Michael.Wormstone@nottingham.edu.cn)



**Yi Nie**

**Assistant Professor in Intelligent Manufacturing**

**Research areas:**

Additive manufacturing, Computational modeling of the manufacturing processes, Topology optimization and lattice structure design.

**Email:**  
[YI-NIE@nottingham.edu.cn](mailto:YI-NIE@nottingham.edu.cn)



**Yinfeng He**

**Assistant Professor in Intelligent Manufacturing**

**Research areas:**

Multi-material additive manufacturing, Inkjet based 3D printing, Photoreactive materials for additive manufacturing.

**Email:**  
[Yinfeng.He@nottingham.edu.cn](mailto:Yinfeng.He@nottingham.edu.cn)



**Dongbing Li**

**Associate Professor in Green Chemicals and Energy**

**Research areas:**

Process and product development based on fast pyrolysis of methane/silane, bitumen, and biomass, Smart manufacturing for food - specialty oils/fatty acids, proteins/polypeptides, and phytochemical pigments.

**Email:**  
[Dongbing.Li@nottingham.edu.cn](mailto:Dongbing.Li@nottingham.edu.cn)



**Nicholas Musyoka**

**Associate Professor in Renewable Energy & Energy Storage**

**Research areas:**

Gas-based technologies (production, separation, conversion and storage) with the key focus on hydrogen and carbon capture and utilization.

**Email:**  
[Nicholas.Musyoka@nottingham.edu.cn](mailto:Nicholas.Musyoka@nottingham.edu.cn)



**Yuanyuan Shao**

**Associate Professor in Green Chemicals and Energy**

**Research areas:**

Bio-Particle Technology, Applications of fluidization technology, Comprehensive Utilization of microalgae-related bioenergy, bioconversion of CO<sub>2</sub>, Particle enhanced wastewater treatment process.

**Email:**  
[Yuanyuan.Shao@nottingham.edu.cn](mailto:Yuanyuan.Shao@nottingham.edu.cn)



**Fathima Jerosha Ifthikar Ahmed**

**Assistant Professor in Green Chemical Processes and Process Intensification**

**Research areas:**

Advanced Energy Materials; Green Hydrogen Energy; Photoreforming; Biowaste Transformation; Charge Storage; Photo(electro)catalysis; Recycling of e-waste

**Email:**  
[ibrahim.khan@nottingham.edu.cn](mailto:ibrahim.khan@nottingham.edu.cn)



### Honglei Zhang

Assistant Professor in Renewable Energy & Energy Storage

**Research areas:**

R&D of novel catalytic materials for renewable energy and environmental pollutant treatment: photocatalytic conversion, biomass energy, industrial pollutant treatment.

**Email:**

[Honglei-Zhang@nottingham.edu.cn](mailto:Honglei-Zhang@nottingham.edu.cn)



### Ibrahim Khan

Assistant Professor in Renewable Energy and Energy Storage

**Research areas:**

Advanced Energy Materials; Green Hydrogen Energy; Photoreforming; Biowaste Transformation; Charge Storage; Photo(electro)catalysis

**Email:**

[ibrahim.khan@nottingham.edu.cn](mailto:ibrahim.khan@nottingham.edu.cn)



### Muhammad Sajjad

Assistant Professor in Renewable Energy & Energy Storage

**Research areas:**

First Principles Simulations, Van der Waals Materials, Thermoelectric Materials, Catalysis, Metal-ion/sulfur Batteries.

**Email:**

[Muhammad.Sajjad@nottingham.edu.cn](mailto:Muhammad.Sajjad@nottingham.edu.cn)



### Xiaoxia Ou

Assistant Professor in Green Chemicals and Energy

**Research areas:**

Porous materials design for catalysis, Catalysis for environmental applications and energy, CO<sub>2</sub> valorisation, Plastics valorisation, Wastewater treatment.

**Email:**

[Xiaoxia.Ou@nottingham.edu.cn](mailto:Xiaoxia.Ou@nottingham.edu.cn)



### Xiaoyang Wei

Assistant Professor in Green Chemicals and Energy

**Research areas:**

Multiphase flow, Development and optimization of gas-solid fluidized beds, Computational fluid dynamics (CFD) simulations, Application of artificial intelligence (AI) in fluidized beds, CO<sub>2</sub> capture and utilization.

**Email:**

[Xiaoyang.Wei@nottingham.edu.cn](mailto:Xiaoyang.Wei@nottingham.edu.cn)



### Learn-Han Lee

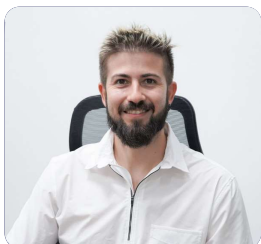
Professor in Life Science and Healthcare

**Research areas:**

Actinobacteria, Microbial Systematics, Microbial Taxonomy, Multidrug-Resistant Pathogens, Drug Discovery, Microbiome, Metagenomic

**Email:**

[learn-han.lee@nottingham.edu.cn](mailto:learn-han.lee@nottingham.edu.cn)



### Paulo Debiagi

Assistant Professor in Renewable Energy & Energy Storage

**Research areas:**

Clean and renewable thermochemical conversion processes for energy and chemicals: pyrolysis, gasification, reforming, combustion and co-combustion. Simulation of reactive flows with chemical kinetic models. Techno-economic analysis of energy systems.

**Email:**

[Paulo.Debiagi@nottingham.edu.cn](mailto:Paulo.Debiagi@nottingham.edu.cn)



### Shahid Iqbal

Assistant Professor in Renewable Energy & Energy Storage

**Research areas:**

Expertise exfoliation of 2D layered materials (chalcogenides & MXene) for energy applications, Van der Waals heterostructures, Li-ion batteries, photocatalytic H<sub>2</sub> & O<sub>2</sub> evolution reactions, nanocomposites materials for Photo-reduction of CO<sub>2</sub>, overall water splitting, wastewater treatment, solar cells and environmental sustainability.

**Email:**

[Shahid.Iqbal@nottingham.edu.cn](mailto:Shahid.Iqbal@nottingham.edu.cn)



### Shu Liu

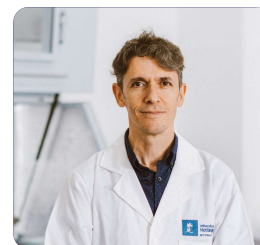
Assistant Professor in Green Chemicals and Energy

**Research areas:**

solid waste-based construction materials, functional pavement materials, and the analysis of long-term deformation and stability of pavements.

**Email:**

[Shu.Liu@nottingham.edu.cn](mailto:Shu.Liu@nottingham.edu.cn)



### Enrico Marsili

Associate Professor in Life Science and Healthcare

**Research areas:**

Biofilm electrochemistry, Development of antimicrobial and antibiofilm agents, and biosensors for clinical applications.

**Email:**

[Enrico.Marsili@nottingham.edu.cn](mailto:Enrico.Marsili@nottingham.edu.cn)



### Weihua Meng

Associate Professor in Life Science and Healthcare

**Research areas:**

Identify the genetic contributing genes for common complex disorders using genetic methods.

**Email:**

[Weihua.Meng@nottingham.edu.cn](mailto:Weihua.Meng@nottingham.edu.cn)



### Loh Teng-Hern Tan

Assistant Professor in Life Science and Healthcare

**Research areas:**

Bioprospection, Drug Discovery, Probiotic, Actinobacteria (Streptomyces), Microbiome, Genome Mining, Antimicrobial Resistance

**Email:**

[loh-teng-hern.tan@nottingham.edu.cn](mailto:loh-teng-hern.tan@nottingham.edu.cn)





### Imran Mahmood Khan

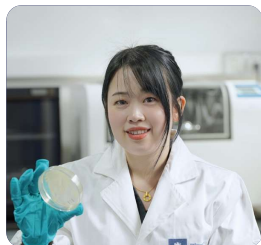
Assistant Professor in Smart Food

#### Research areas:

Food Safety; Nanomaterial Fabrication; Biosensing nanoprobe; Aptasensors; Antibacterial activity; Photo-dynamic/thermal therapy

#### Email:

[imran-mahmood.khan@nottingham.edu.cn](mailto:imran-mahmood.khan@nottingham.edu.cn)



### Jodi Woan-Fei Law

Assistant Professor in Life Science and Healthcare

#### Research areas:

Microbial Systematics; Streptomyces; Microbial Taxonomy; Multidrug-Resistant Pathogens; Gut Anaerobes; Human Probiotics; Microbiome

#### Email:

[jodi-woan-fei.law@nottingham.edu.cn](mailto:jodi-woan-fei.law@nottingham.edu.cn)



### Minaxi Sharma

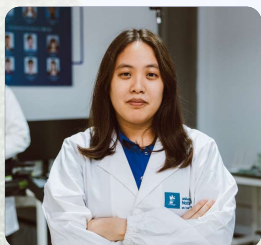
Assistant Professor in Smart Food

#### Research areas:

Food technology, nanoencapsulation, food waste valorization for valuable plant-bioactive nutrients, green processing technologies, and the development of functional, smart and vegan foods

#### Email:

[Minaxi.Sharma@nottingham.edu.cn](mailto:Minaxi.Sharma@nottingham.edu.cn)



### Sze Shin Low

Assistant Professor in Life Science & Healthcare

#### Research areas:

Biosensor, Nanomaterials and molecular biology.

#### Email:

[Sze-Shin.Low@nottingham.edu.cn](mailto:Sze-Shin.Low@nottingham.edu.cn)

